

# DAMAGE PREVENTION ENGINEERING, Inc.!

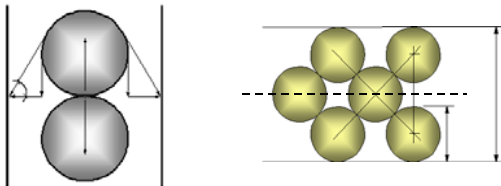


Damage Prevention Engineering was founded to assist shippers, carriers and third parties involved with the safe movement of freight over-the-road or by rail.

## dPE:

- **ASSISTS IN DEVELOPING EFFECTIVE LOAD SECUREMENT AND FREIGHT DAMAGE PREVENTION METHODS AND PROCEDURES**

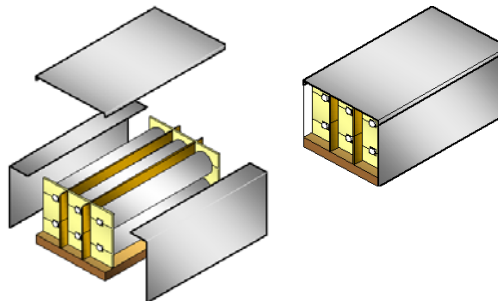
- Engineering analysis of load securement practices and compliance recommendations



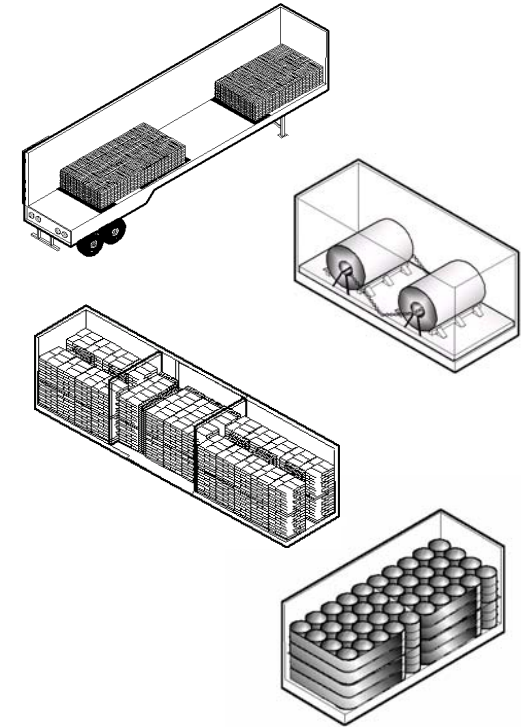
- Computer assisted load planning and securement requirements
- Product Integrity Testing for freight and securement



- Warehousing and trans-loading assessments
- Industrial package design (no material sourcing affiliations)



- 3-dimensional load securement guidelines



- Approval process guidance for new load securement methods or materials



- PROVIDES **LIAISON** WITH GOVERNMENT AND INDUSTRY ORGANIZATIONS

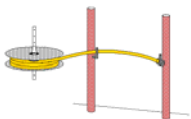
- DOT - FMCSA
- CCMTA
- AAR
- ISTA
- CVSA

- **TRAINS PERSONNEL** IN EFFICIENT DAMAGE PREVENTION PRACTICES

- Customized training materials in classroom, individualized, or reference format



- On location staff training



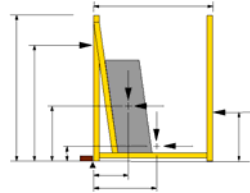
- Subscriber call-in help service

- **MEASURES AND EVALUATES** FREIGHT AND DISTRIBUTION ENVIRONMENTS

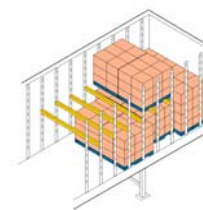
- Package & material testing



- Small and full-scale testing
- Freight dynamics measurement and analysis

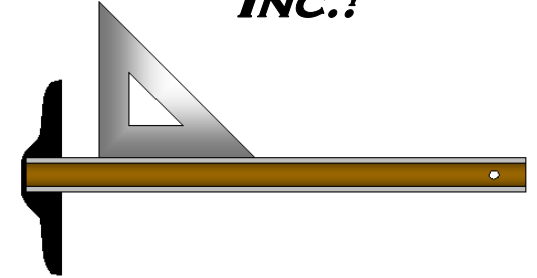


- Comprehensive and comprehensible results presentation



**CALL OR WRITE TODAY AND SEE WHAT DPE CAN DO FOR YOUR BOTTOM LINE!**

# **DAMAGE PREVENTION ENGINEERING, Inc.!**



## **dPE**

*"The Science of Preventing Freight Damage"*

**dPE, Inc.**  
 1079 Rue Alain, Blainville, QC  
 Canada J7C 3E5  
 In Canada: (450) 939-3593  
 In U.S.: (719) 250-3836  
[dPE\\_Inc@hotmail.com](mailto:dPE_Inc@hotmail.com)